

Deutsche
Qualität
Garantiert



AESOLAR



132

HALF
CELLS

182
mm

CELL
SIZE



NO SELF
SHADING



LID
RESISTANT



PID
RESISTANT



SALT CORROSION
RESISTANT



EXTREME
RESISTANCE TO WIND



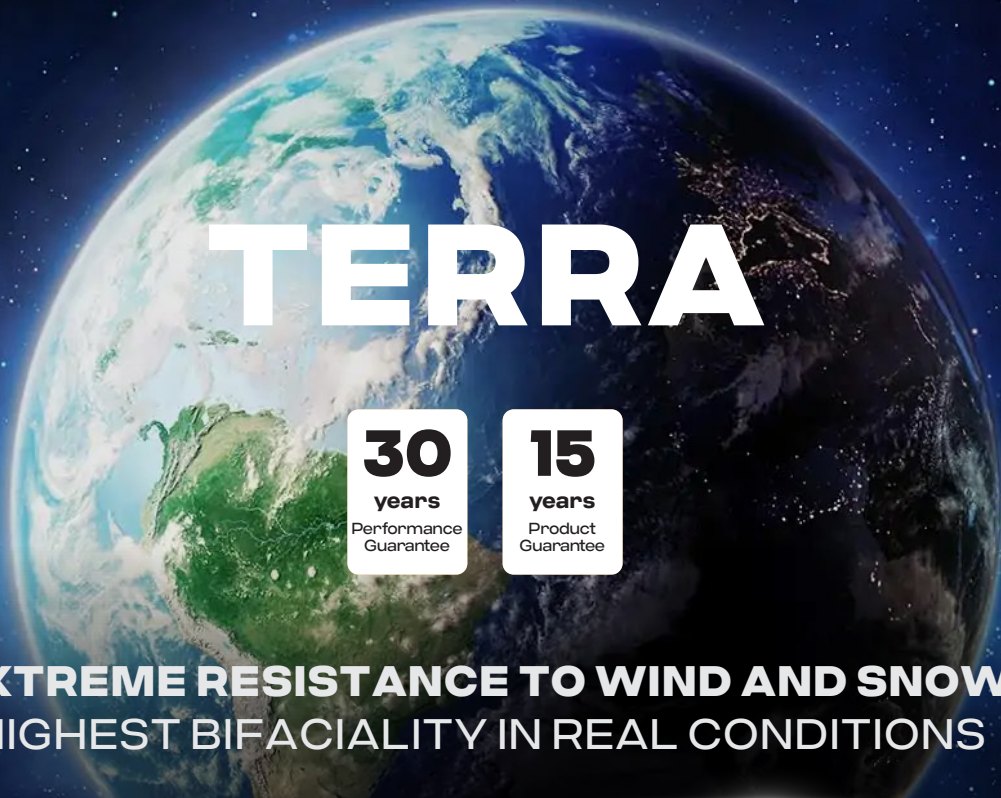
EXTREME
RESISTANT TO SAND



NH₃
S
AMMONIA
RESISTANT



HIGHLY STABLE
AND TOUGH



TERRA

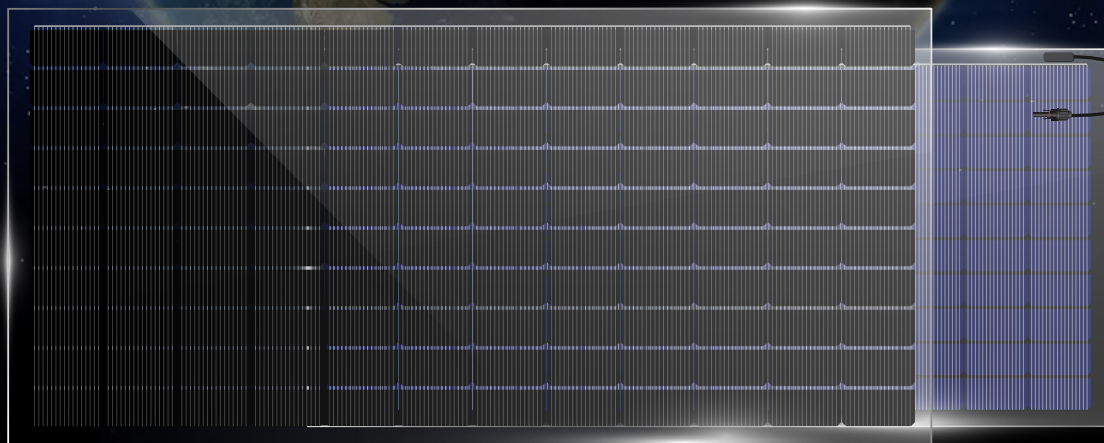
30

years
Performance
Guarantee

15

years
Product
Guarantee

**EXTREME RESISTANCE TO WIND AND SNOW
HIGHEST BIFACIALITY IN REAL CONDITIONS**

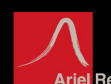


495W-505W AE MD-L132BD Series



IEC 61215
IEC 61730
Regular Production Surveillance
Type Tested and Monitored

IEC 62716 (Ammonia corrosion)
IEC 61701 (Salt mist corrosion)
IEC 60068 (Sand and dust)
IEC 62804 (PID resistance)



LLOYD'S
Underwriters

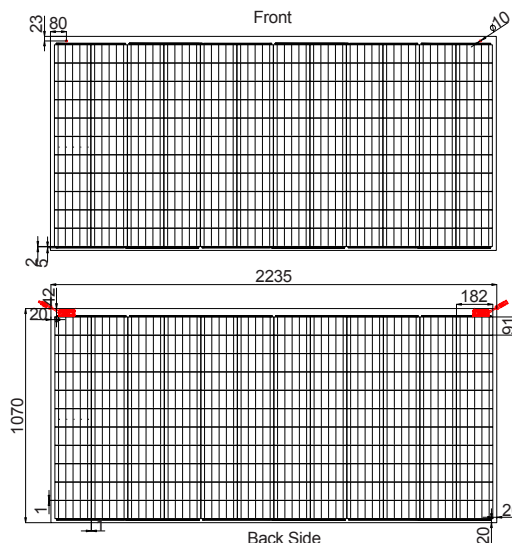


www.ae-solar.com

AE MD-L132BD Series 495W-505W

Mechanical and design specification

Cell type	Gallium-doped Mono c-Si PERC, Half-cut cells, 182 mm
No. of cells	132
Bifaciality	70±5%
Glass	2.0 mm, high transmission, AR coated, tempered
Encapsulation	POE
Back cover	2.0 mm, high transmission solar glass, tempered
Junction box	IP 68 rated
Frame	30 mm anodized Aluminium alloy
Cable	1 x 4 mm ² , 350 mm length or customized
Connectors	MC 4 / MC 4 compatible
Dimension	1070 mm x 2235 mm x 30 mm
Weight	30.5 kg
Hail resistance	Max. Ø 25 mm at 23 m/s
Wind load	2400 Pa/ 244 kg/ m ²
Mechanical load	5400 Pa/ 550 kg/ m ²

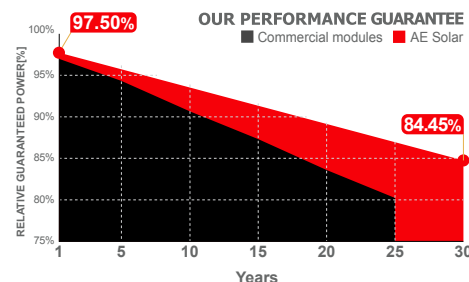
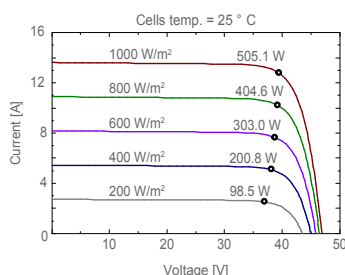
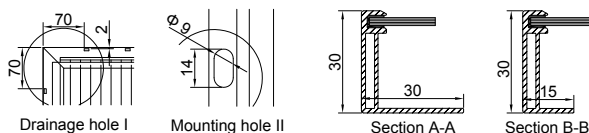


Packaging information

Packaging configuration	72 pcs / double pallets
Loading capacity	792 pcs / 40 HQ
Size / Pallet	2125 mm x 1140 mm x 2490 mm
Weight	2276 kg / double pallets

Temperature ratings

Operating temperature (°C)	-40 to +85
Temp.coefficient of P _{max} (%/°C)	-0.35
Temp.coefficient of V _{oc} (%/°C)	-0.275
Temp.coefficient of I _{sc} (%/°C)	0.045
Nom. operating temp. NOCT (°C)	45 ± 2



Electrical specifications (STC*):		AE495MD-L132BD	AE500MD-L132BD	AE505MD-L132BD
Nominal Max. Power	P _{max} (Wp)	495	500	505
Maximum operating voltage	V _{MPP} (V)	38.79	39.03	39.27
Maximum operating current	I _{MPP} (A)	12.76	12.81	12.86
Open-circuit voltage	V _{oc} (V)	46.34	46.64	46.93
Short-circuit current	I _{sc} (A)	13.52	13.57	13.62
Module efficiency	η (%)	20.6	20.9	21.1
Power tolerance	(W)		0~+5	
Maximum system Voltage	(V)		1500	
Maximum series fuse rating	(A)		25	

*STC: Standard test conditions (Irradiance 1000 W/m², Cell temperature 25°C and air mass of AM1.5)

Electrical specifications (NMOT*):		AE495MD-L132BD	AE500MD-L132BD	AE505MD-L132BD
Nominal Max. Power	P _{max} (Wp)	370	373	377
Maximum operating voltage	V _{MPP} (V)	36.20	36.40	36.60
Maximum operating current	I _{MPP} (A)	10.21	10.25	10.29
Open-circuit voltage	V _{oc} (V)	43.40	43.60	43.80
Short-circuit current	I _{sc} (A)	10.82	10.86	10.90

*NMOT: Normal Module Operating Temperature (Irradiance 800 W/m², Ambient temperature 20°C, air mass of AM1.5 and wind speed of 1 m/s)

The specifications and characteristics contained in this datasheet may deviate slightly from our actual products due to the product developments and uncertainty of measurement devices. The specifications included in the datasheet are subject to change without prior notice.